

# WESTERN RED CEDAR



**WESTWOOD**  
LUMBER SALES

# WESTWOOD LUMBER SALES

NEW

Western, Clear, Vertical Grain Hemlock



## Features:

- Uniform grain and color, ranging from creamy white to pale gold
- Fine texture
- S4S, square edge

## Applications:

- Molding
- Window trim
- Doors
- Ran to pattern profiles

## Sizes:

- 1x4 - 1x12
- Random length tallies, odd & evens
- 1200 BF units

New Haven, CT 1-800-255-7993

Kalamazoo, MI 1-800-782-7666

## In-Stock Lumber

### Western Red Cedar Boards

#### Knotty Boards

1x4 thru 1x12 KD STK WRC S1S2E

1x4 thru 1x12 NPS/Tight Knot WRC S1S2E

5/4x4 thru 5/4x12 NPS/Tight Knot WRC S1S2E

#### Clear Boards

1x4 thru 1x12 Clear WRC S4S

1x4 thru 1x12 Clear WRC Rough

5/4x4 thru 5/4x12 Clear WRC S4S

1x4 thru 1x12 Clear WRC S4S Finger-Joint

5/4x4 thru 5/4x12 Clear WRC S4S Finger-Joint

### Western Red Cedar Rough Dimension and Timbers

2x4 thru 2x12 #2 & BTR WRC Rough

4x4 thru 4x12 #2 & BTR WRC Rough

6x6 thru 6x12 #2 & BTR WRC Rough

8x8 thru 8x12 #2 & BTR WRC Rough

10x10 & 12x12 & 12x16 #2 & BTR WRC Rough

Custom Sizes RGH or S4S

\* Clear Rough Dimension and Timbers Available \*

### Western Red Cedar S4S Dimension and Timbers

2x4 thru 2x12 #2 & BTR WRC S4S

2x4 thru 2x12 Clear WRC S4S

\* S4S Timbers Available \*

### Inland Cedar Boards

1x4 thru 1x12 #3 IRC KD S1S2E

1x4 thru 1x12 D & BTR IRC KD S1S2E

### Western Red Cedar Decking

2x2 x 36", 42", 48" & 96" D & BTR WRC S4S

2x4 & 2x6 Architect Knotty WRC Decking S4S

4x4 STK WRC S4S

2x4 & 2x6 Clear WRC Decking S4S

5/4x6 WRC Radius Edge Decking—STK & Clear

### Western Red Cedar Bevel Siding

11/16x6 STK WRC Bevel  
11/16x8 STK WRC Bevel  
3/4x10 STK WRC Bevel  
7/8x8 STK Rabbeted Bevel  
5/4x8 STK Dolly Varden WRC Bevel  
11/16x10 WRC Haida Skirl Wavy Edge Siding  
15/16x10 WRC Haida Skirl Wavy Edge Siding  
15/16x12 WRC Haida Skirl Wavy Edge Siding  
1/2x4 Aye & BTR Finger-Joint Bevel  
1/2x6 Aye & BTR WRC Finger-Joint Bevel  
1/2x8 Aye & BTR WRC Finger-Joint Bevel  
3/4x10 Aye & BTR Finger-Joint Bevel  
1/2x6 Aye & BTR WRC Bevel  
1/2x6 CVG WRC Bevel  
1/2x8 Aye & BTR WRC Bevel  
1/2x8 CVG WRC Bevel  
3/4x10 Aye & BTR WRC Bevel  
3/4x10 CVG WRC Bevel

### Shakertown Siding

Craftsman Shingle Panels Staggered & Even Butt  
\* Available Pre-Finished \*

### Western Red Cedar Pattern

#### Knotty Pattern

1x6 STK WRC T&G V4E  
1x8 STK WRC T&G V4E  
1x8 STK WRC Channel Rustic  
1x10 STK WRC Channel Rustic  
1x6 STK WRC WP-11  
1x6 STK WRC WP 106  
2x6 #2 STK WRC Log Cabin  
2x8 #2 STK WRC Log Cabin  
2x10 #2 STK WRC Log Cabin

#### Clear Pattern

1x4 Aye & Btr WRC T&G V4E  
1x6 Aye & Btr WRC T&G V4E  
1x6 Aye & Btr WRC T&G V4E Finger-Joint  
\* Custom Pattern and Most WWPA Profiles Available \*

### Pine Boards

1x4 thru 1x12 C & BTR Ponderosa Pine  
1x4 thru 1x12 D Select Ponderosa Pine  
1x4 thru 1x12 #2 & BTR Ponderosa Pine  
1x4 thru 1x12 #3 & BTR Ponderosa Pine  
1x4 thru 1x12 Interfor Reserve Eased Edge Pine  
1x4 thru 1x12 Sterling Idaho White Pine  
\* Custom Pattern and Most WWPA Profiles Available \*

### Douglas Fir Boards

1x4 thru 1x8 & 1x12 C & BTR MG S4S KD  
1x4 thru 1x12 C & BTR VG S4S KD  
1x6 C & BTR MG PATT WP-4  
5/4x4 thru 5/4x12 C & BTR VG S4S KD  
2x4 thru 2x12 C & BTR VG S4S KD  
5/8x4 C & BTR VG & MG Beaded Ceiling  
5/8x4 C & BTR Primed FJ Beaded Ceiling  
1x4 C & BTR VG & MG Flooring  
5/4x4 C & BTR MG Flooring

### # 1 Douglas Fir Rough Sawn Timbers

6x6 # 1 Douglas Fir Rough  
8x8 & 8x12 # 1 Douglas Fir Rough  
10x10 # 1 Douglas Fir Rough  
12x12 & 12x16 # 1 Douglas Fir Rough

### Southern Yellow Pine

1x6 #2 Flooring  
1x8 #2 Flooring  
1x6 D & BTR Flooring

### Hardwood Boards

1x4 thru 1x12 FAS S4S Poplar  
1x4 thru 1x12 FAS S4S Oak  
1x4 & 1x6 S4S Maple  
1x4 thru 1x12 Finger-Joint Primed Poplar

# Waldun Shakes and Shingles

## Douglas Fir Plywood

Sanded AC Fir 1/4, 1/2 and 3/4  
 5/8 & 3/8 4x8 & 4x10 Rough Fir—Square Edge  
 MDO 3/8, 1/2 & 3/4 G1S/G2S Fir  
 AB Marine 1/2 & 3/4 Fir  
 4" OC & 8" OC T1-11 Fir & 12" RB&B

## Domestic Hardwood Plywood

Alder 1/4 & 3/4 Plain Sliced Veneer Core  
 Birch 1/4, 1/2 & 3/4 Rotary Cut Veneer Core  
 Cherry 1/4, 1/2 & 3/4 Plain Sliced Veneer Core  
 Hickory 1/4 & 3/4 Plain Sliced Veneer Core  
 Mahogany 1/4 & 3/4 Plain Sliced Veneer Core  
 Maple 1/4, 1/2 & 3/4 Rotary Cut Veneer Core  
 Oak 1/4, 1/2 & 3/4 Rotary & Plain Sliced  
 Poplar 1/4 & 3/4 Rotary Cut Veneer Core  
 Knotty Pine 1/4, 1/2 & 3/4  
 Walnut 1/4 & 3/4 Plain Sliced Veneer Core

## Import Hardwood Plywood

Birch 3.0 5.2 G1S/G2S Veneer Core  
 Oak 5.2 G1S/G2S Plain Sliced  
 Chinese Birch 12 & 18 mm Veneer Core  
 Russian Birch 5x5 3, 6, 9, 12 & 18 mm  
 Russian Birch 4x8 12 & 18 mm  
 Lauan 2.7, 5.2, 9, 12, 15 & 18 mm  
 3/8 4x8 Bending Lauan, Barrel & Column

## Particle Board

Particle Board Countertop  
 Particle Board Stair Treads  
 Particle Board Risers  
 3/4 x 49 x 97 Industrial Particle Board  
 3/4 x 49 x 97 White Melamine 2-Sides

## MDF

1/4, 1/2 & 3/4 MDF Premium  
 1/2 & 3/4 4x8 MDF Ultralite  
 1/4 4x8 MDF Beadboard

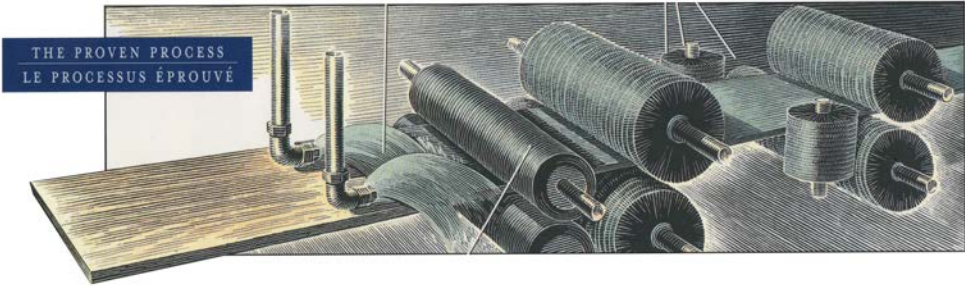
Product ID	Description	KD/Green
25X	16" #2 5X, 4 bundles @ 5" exposure	Green
5X	16" #1 5X, 4 bundles @ 5" exposure	Green
CC CUT	18" Cabin Cut R&R 5" CLR Sanded, 4 bundles @ 5" exposure	KD
HR	Hip and Ridge 16.5 lineal per bundle	Green
HSHV	24" Heavy Handsplit Shakes, 5 bundles @ 10" exposure	Green
HSME	24" Medium Handsplit Shakes, 5 bundles @ 10" exposure	Green
Perf	18" #1 Perfections, 4 bundles @ 5.5" exposure	Green
Perf2	18" #2 Perfections, 4 bundles @ 5.5" exposure	Green
Roy	24" #1 Royals, 4 bundles @ 7.5" exposure	Green
RR	18" #1 R&R Unsanded, 2 boxes @ 7" exposure	KD
RR2	18" #2 R&R, 2 boxes @ 7" exposure	KD
RRMG	18" #1 R&R Machine Grooved, 2 boxes @ 7" exposure	KD
RRP	18" #1 R&R Primed, 2 boxes @ 7" exposure	KD
RRSF	18" #1 R&R Sanded Face, 2 boxes @ 7" exposure	KD
RRSFY	18" #1 R&R Sanded Face Yellow Cedar, 2 boxes @ 7" exposure	KD
TRAD	Traditional R&R CLR Sanded, 2 boxes @ 7" exposure	KD

*CCA and Fire Treated available as special order. Prestaining available 1 or 2 coats.*



**CERTIGRADE® WESTERN CEDAR SHINGLES**

<b>Number 1 Blue Label®</b>
The premium grade of shingles for sidewalls and roofs. These top-grade shingles are 100% heartwood, 100% clear and 100% edge grain. Available in 16" or 18" or 24" lengths.
<b>Number 2 Red Label</b>
A good grade for many applications. Not less than 10" clear on 16" shingles, 11" clear on 18" shingles and 16" clear on 24" shingles. Flat grain and limited sapwood are permitted in this grade.
<b>Certi-Split® Handsplit Shakes</b>
These shakes have split faces and sawn backs. Available in Premium Grade (100% edge grain) or Number 1 Grade (up to 20% flat grain allowed in each bundle).
<b>Certigrade® Rebutted and Rejointed Shingles</b>
Also known as R&R products, these materials have the same specifications as Number 1 and Number 2 Certigrade shingles, but they are machine re-trimmed for parallel edges and with smooth butts sawn at right angles where a uniform appearance is desired.
<b>Certigroove® Machine Grooved Shingles</b>
Machine grooved shingles are manufactured as a rebutted and rejointed shingle with one face striated for a length greater than the maximum exposure. Machine grooved products are for sidewall applications only, and are remanufactured from 16", 18" and 24" shingles.
<b>Note:</b> <i>Western Cedar's natural color varies.</i>



**Pre-Finishing**

Finishes from Cabot, Olympic, Sherwin Williams  
Color Matching Available

**Benefits**

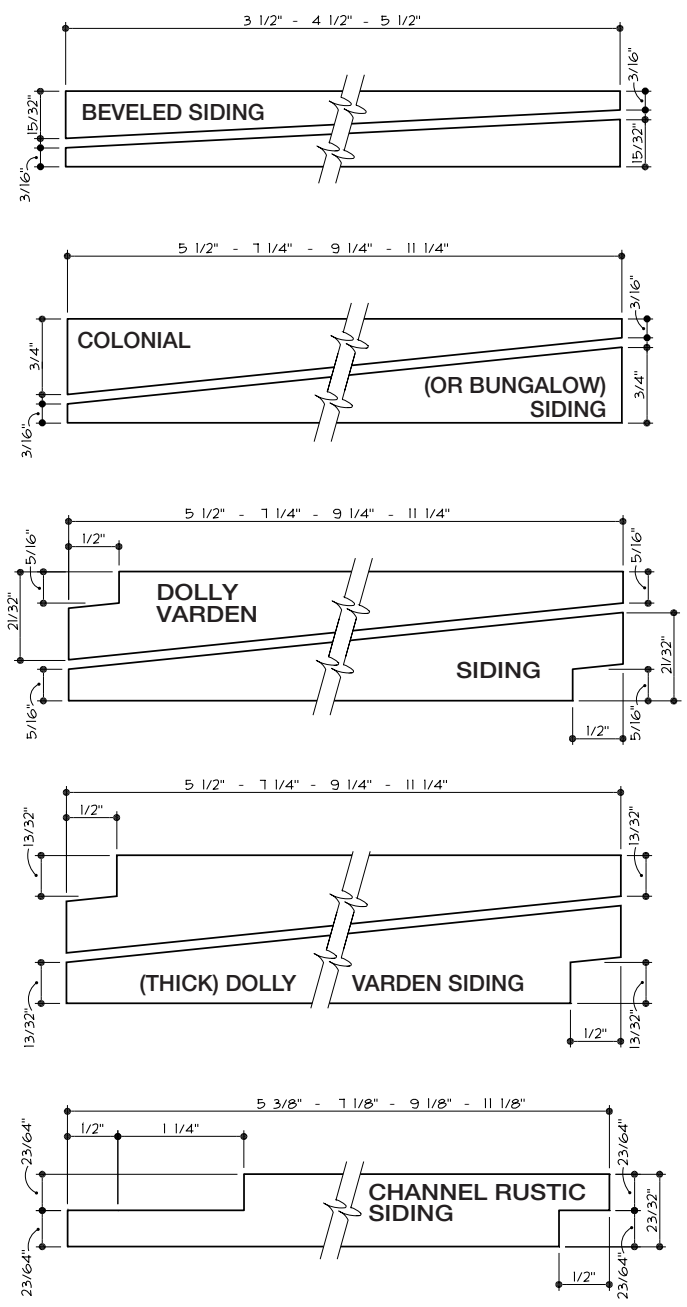
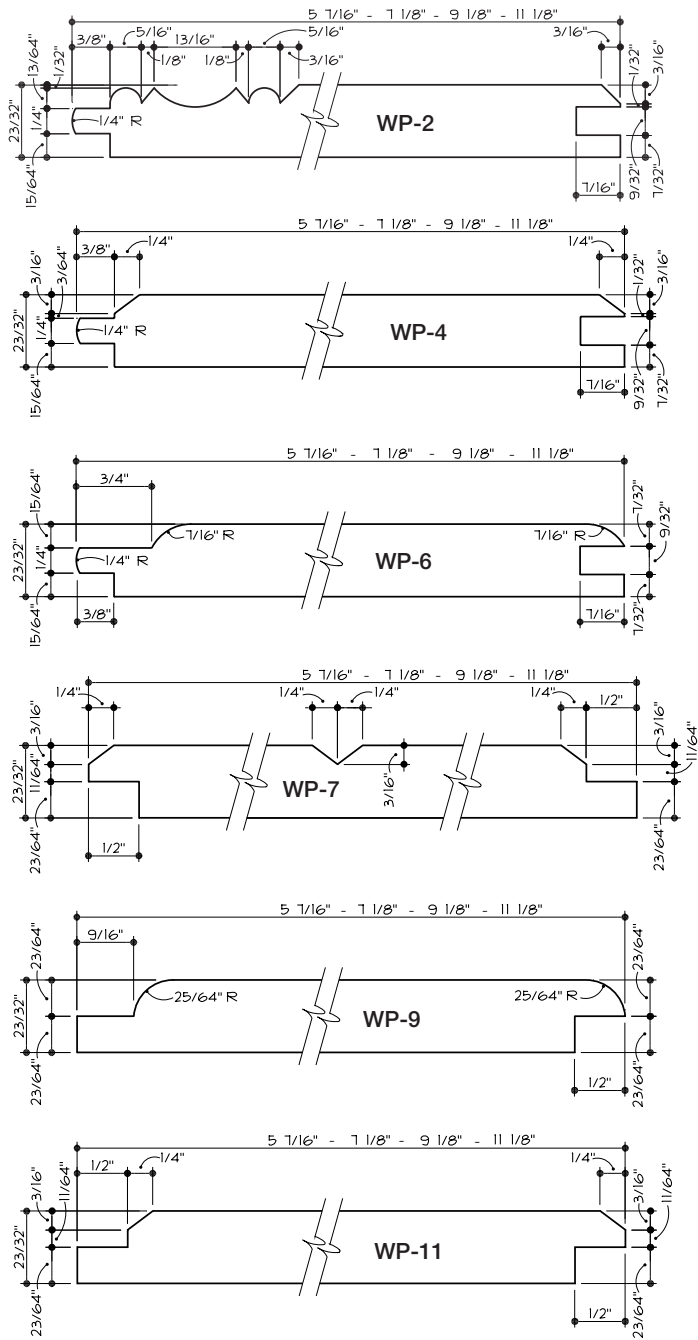
- Protected from damage by weather
- Saves time and labor cost
- No costly scheduling, weather or seasonal delays
- No over spray, dripping, splattering or clean-up problems
- No color variation, lapmarks, shrink lines, streaking, or dirt pick up

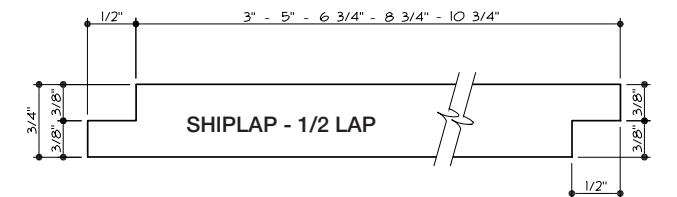
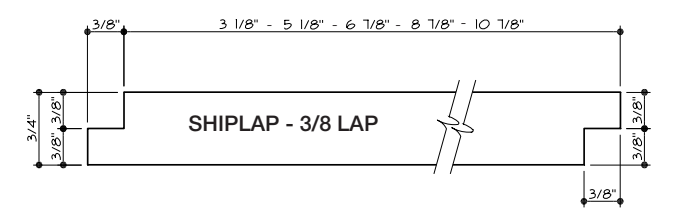
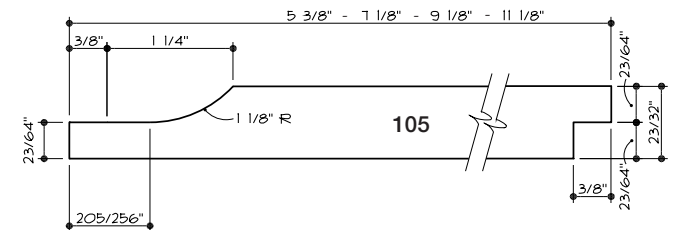
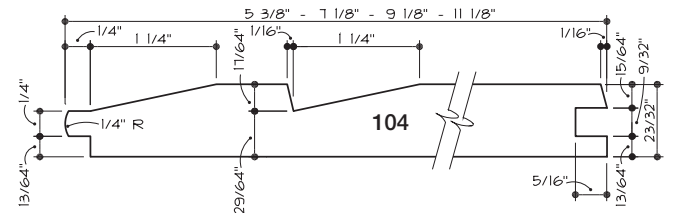
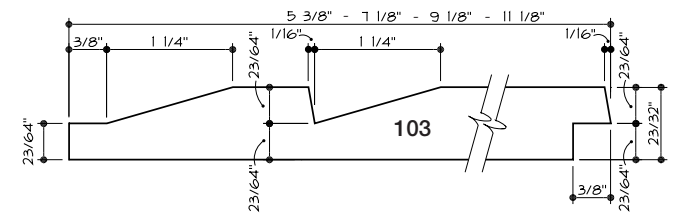
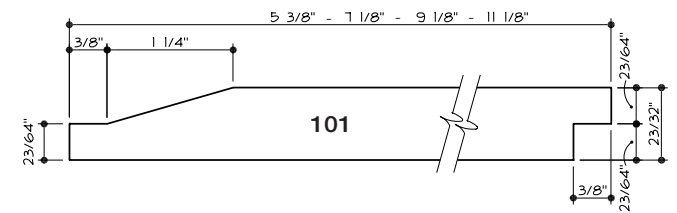
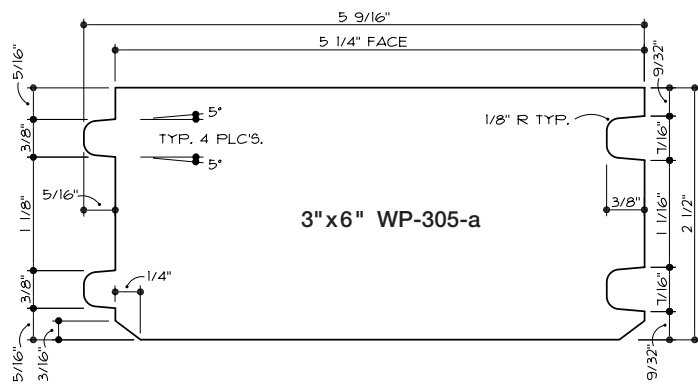
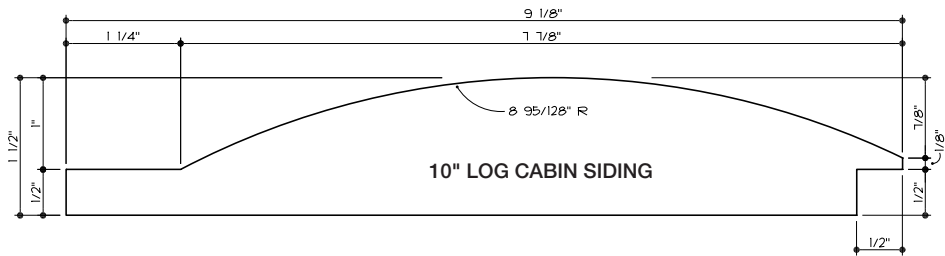
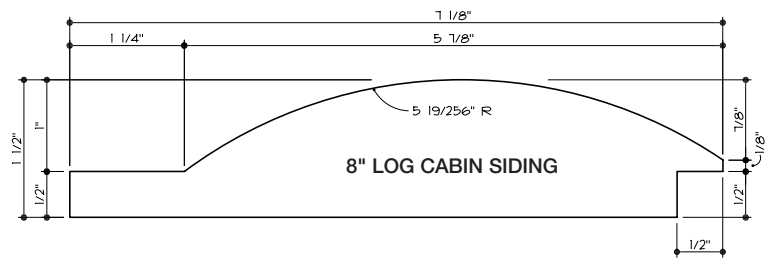
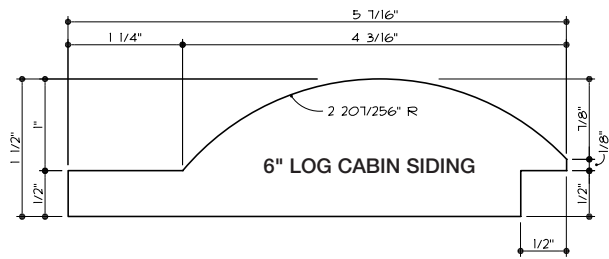
**Finishes Available**

- Transparent
- Semi-Transparent
- Semi-Solid
- Solid Color

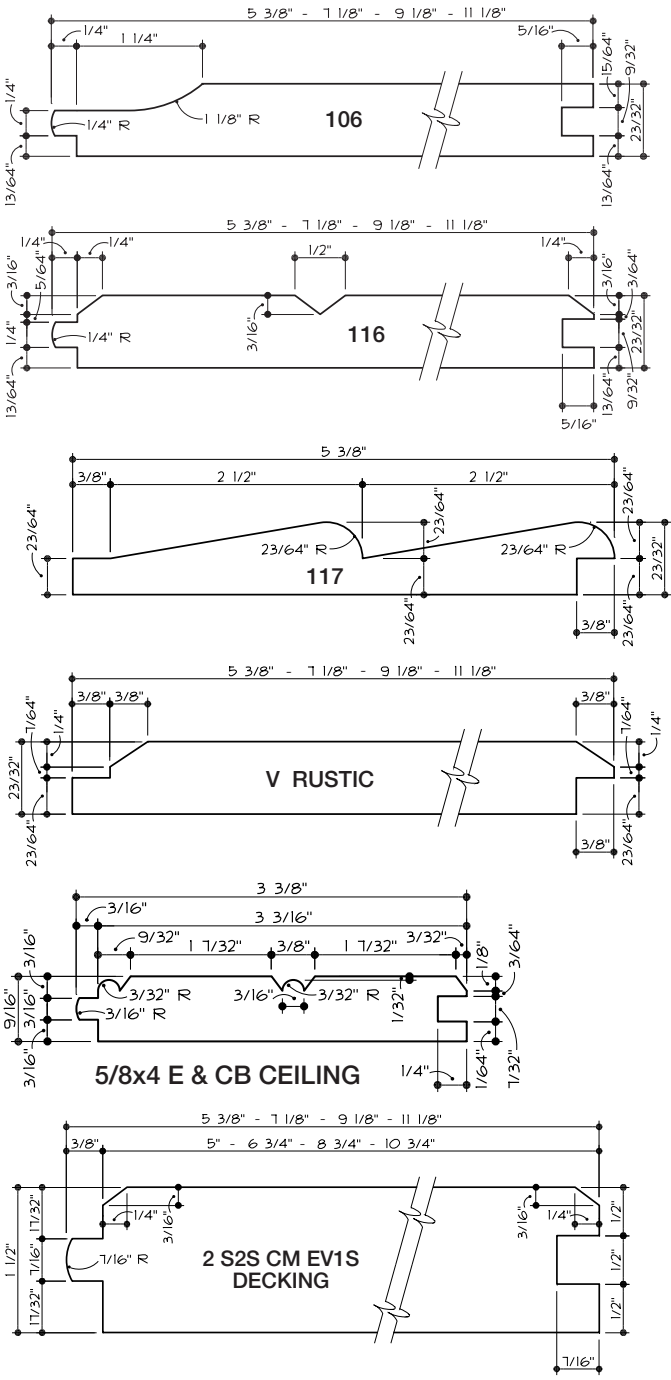
**Millwork**

- Custom Profiles
- Custom Timber Sizing
- S4S Timbers





# Coverage Estimator



Pattern	Nominal Width	Width		Factor for Lineal Feet <sup>1</sup>	Factor for Board Feet <sup>2</sup>
		Dressed	Exposed Face		
Bevel & Bungalow	4	3½	2½	4.8	1.60
	6	5½	4½	2.67	1.33
	8	7¼	6¼	1.92	1.28
	10	9¼	8¼	1.45	1.21
Dolly Varden	4	3½	3	4.0	1.33
	6	5½	5	2.4	1.2
	8	7¼	6¾	1.78	1.19
	10	9¼	8¾	1.37	1.14
Drop, T&G and Channel Rustic	12	11¼	10¾	1.12	1.12
	4	3¾	3½	3.84	1.28
	6	5¾	5½	2.34	1.17
Log Cabin	8	7½	6¾	1.75	1.16
	10	9½	8¾	1.35	1.13
	6	5⅞	4⅞	2.43	2.43
Boards	8	7½	6¾	1.81	2.42
	10	9½	8¾	1.39	2.32
	2	1½		The exposed face width will vary depending on size selected and on how the boards-and-battens or boards-on-boards are applied. Minimum overlap is ½". Determine the exposed face, then refer to footnotes to calculate factor.	
4	3½				
6	5½				
8	7¼				
10	9¼				

<sup>1</sup> Lineal Foot Factor is derived by dividing 12" by the exposed face width.  
<sup>2</sup> Board Foot Factor is derived by dividing the nominal width by the exposed face width and is based on nominal 1" stock, except log cabin. Log cabin is based on 2" thickness. For nominal 1½" log cabin, multiply by .75.  
 Note: Factors do not include any allowance for trim or waste and do not apply to diagonal installations. A 10% allowance (for trim and waste) should be added to the square footage required before the factors are used. Refer to Procedure at left.

## Coverage Calculations

Siding and paneling are usually sold either by the lineal (running) foot or by the board foot.

To simplify cost and coverage estimations, select the appropriate factor from the Coverage Estimator table according to how the material is priced. The factors provided in the table can be used to calculate the amount of siding required either in lineal feet or in board feet.

In either case, the square footage of the area to be covered is calculated first, then multiplied by the appropriate factor.

## Procedure:

- A** Calculate the square footage in walls: Length x Width = Square Feet
- B** Calculate—and then subtract—the square footage of openings. Now add 10% for trim and waste.
- C** Multiply the result by either the factor for lineal feet or the factor for board feet.
- D** Multiply the total footage required by price.



# **WESTWOOD**

## **LUMBER SALES**

**1407 Bandelier Road  
P.O. Box 526  
New Haven, IN 46774**

**Local: 260.749.4143  
Fax: 260.749.5653  
Toll Free: 800.255.7913**

**910 Sheldon Court  
Kalamazoo, MI 49001**

**Local: 269.343.1361  
Fax: 269.343.5332  
Toll Free: 800.782.7166**